

BRIGHTSIGN QUICK START GUIDE

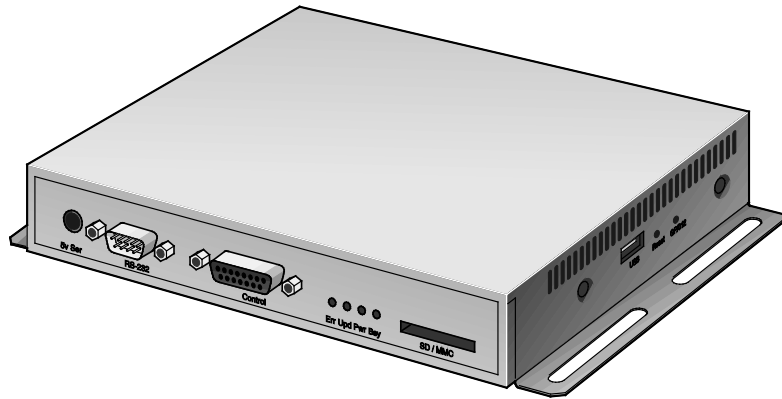
HD120, HD220, HD1020, XD230, XD1030, XD1230

BrightSign, LLC. 16795 Lark Ave., Suite 200 Los Gatos, CA 95032 | 408-852-9263 | www.brightsign.biz

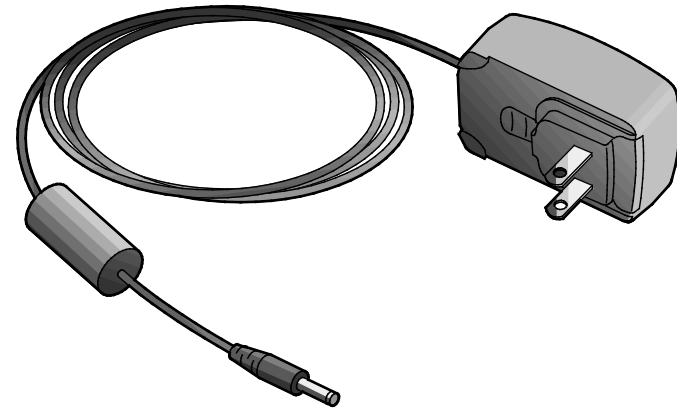
TABLE OF CONTENTS

What's in the box?	1	Setting up BrightSign Players	7
What is BrightSign?	2	Creating presentations	10
Benefits	2	Creating a Full-Screen Presentation	10
Capabilities	2	Creating a Multiple Zone Presentation	13
Models	3	Creating an Interactive Presentation	17
Getting Started	4	Publishing Presentations	23
Connecting a display	5	Next steps	26
Using an HDMI cable	5		
Connecting speakers	6		

What's in the box?



BrightSign Player



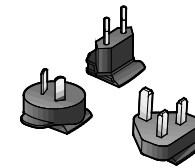
Power Adapter



Rubber feet



Cable Mount



International prongs



SD slot cover



Cable tie

Tip: Use the cable mount and ties to keep the cables securely attached to your BrightSign player.

Note: An SD card is not included in the package, but it is required for the player to function.

What is BrightSign?

A BrightSign player is a standalone digital sign and kiosk controller. Because BrightSign players are non-PC devices with no moving parts, they are durable, reliable, and energy-efficient. They are designed specifically for digital signs, making them an ideal solution for information kiosks, retail displays, video walls, museum exhibits, and more.

Benefits

- Everything included: the hardware, the software, and the networking
- Astonishing full-HD quality
- Reliable solid-state platform designed specifically for digital signage
- Support for interactive displays with buttons, touch screens, and more
- Multi-zone screen layouts and synchronization of multiple displays
- Versatile networking options allowing remote control of presentations

Capabilities

You can use a BrightSign player to do any combination of the following:

- Play content from a Secure Digital card (SD, SDHC, SDXC) or USB Flash drive.

Note: *You must format your SD storage using FAT32 for the player to receive network updates and generate logs. You should only format the storage using NTFS if you need to play media files that are 4GB or larger in size.*

- Display content on a high-definition monitor or TV.
- Play looping video, images, and music in HD.
- Divide the display into separate content windows called zones to play back video and images simultaneously.
- Display HTML5 content (available on the XD230, XD1030, and XD1230 only).
- Play live HD video, including HDCP-secured content, using an ATSC/ClearQAM tuner (available on the XD1230 only).

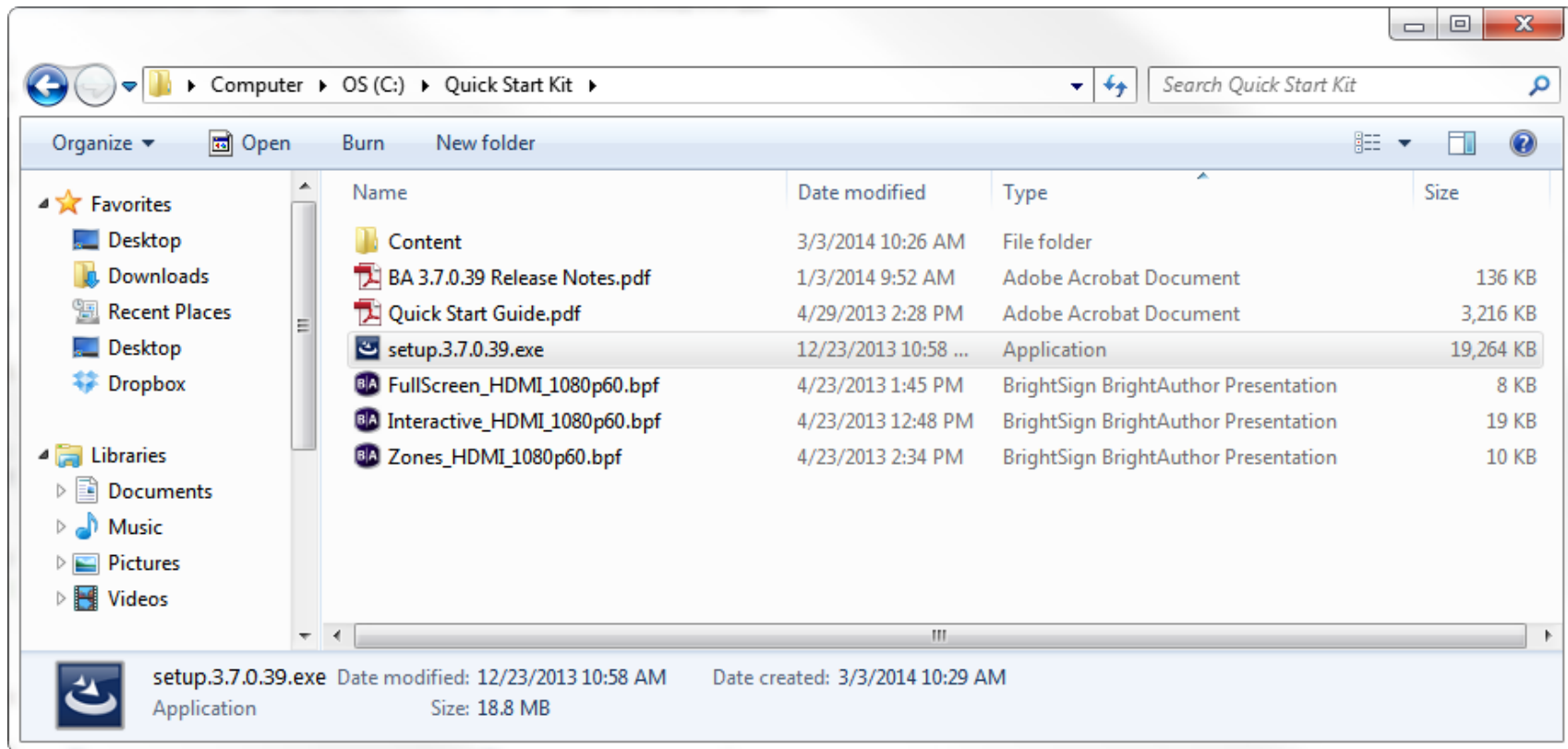
- Schedule content to play at specific times (hour, day, month, and year).
- Create looping displays.
- Display RSS feeds and other network information.
- Run interactive presentations that playback content based on inputs from buttons, touch screens, mice, network devices, and more.
- Synchronize video playback across multiple BrightSign players.
- Update software and content remotely using the [BrightSign Network](#).

Models

To compare BrightSign models and see all the features available for your digital signage, see the [BrightSign Product Comparison Matrix](#).

Getting Started

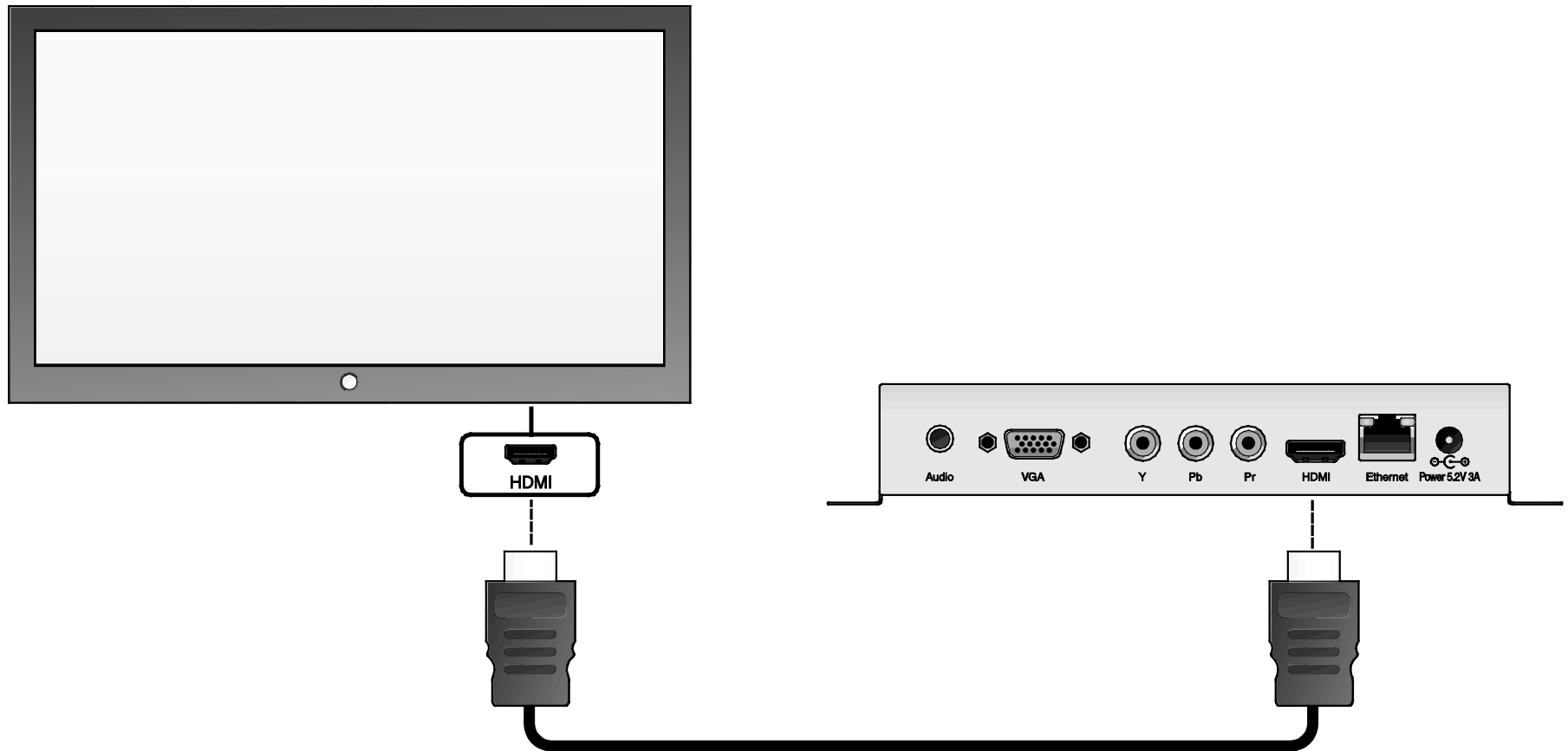
1. Download the **QuickStart.zip** file from the following URL: www.brightsign.biz/quickstart.
2. Unzip the file to a location on your PC.
3. Double-click the **Setup.exe** file and follow the on-screen instructions to install the BrightAuthor software.



Locating the BrightAuthor install file

Connecting a display

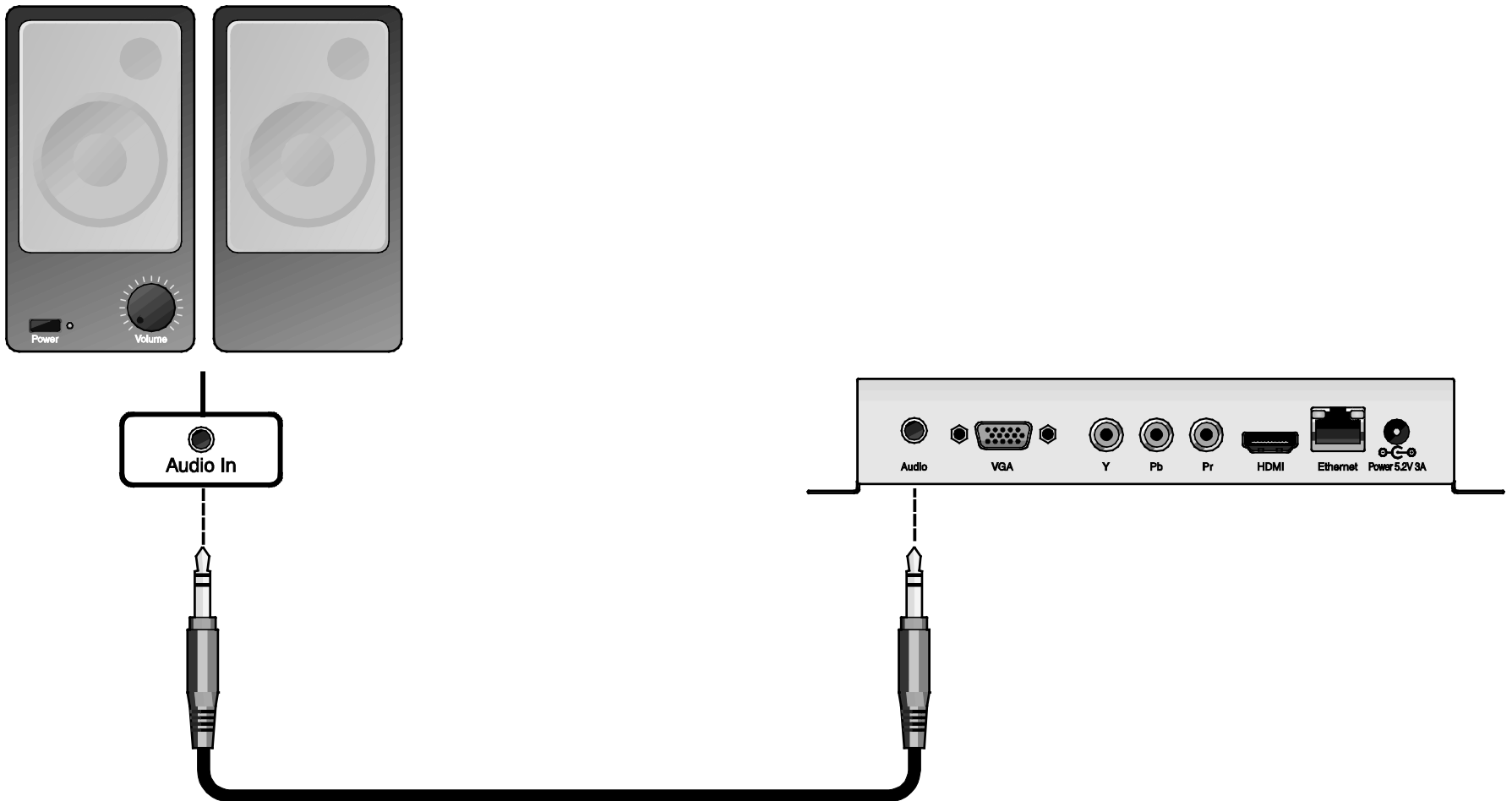
Using an HDMI cable



Note: The connectors on BrightSign players vary by model. Your BrightSign player may have different connectors from those displayed above.

Connecting speakers

If your presentations include audio, you can route the audio through an HDMI display connected to your BrightSign player, or you can connect powered speakers to your BrightSign player.



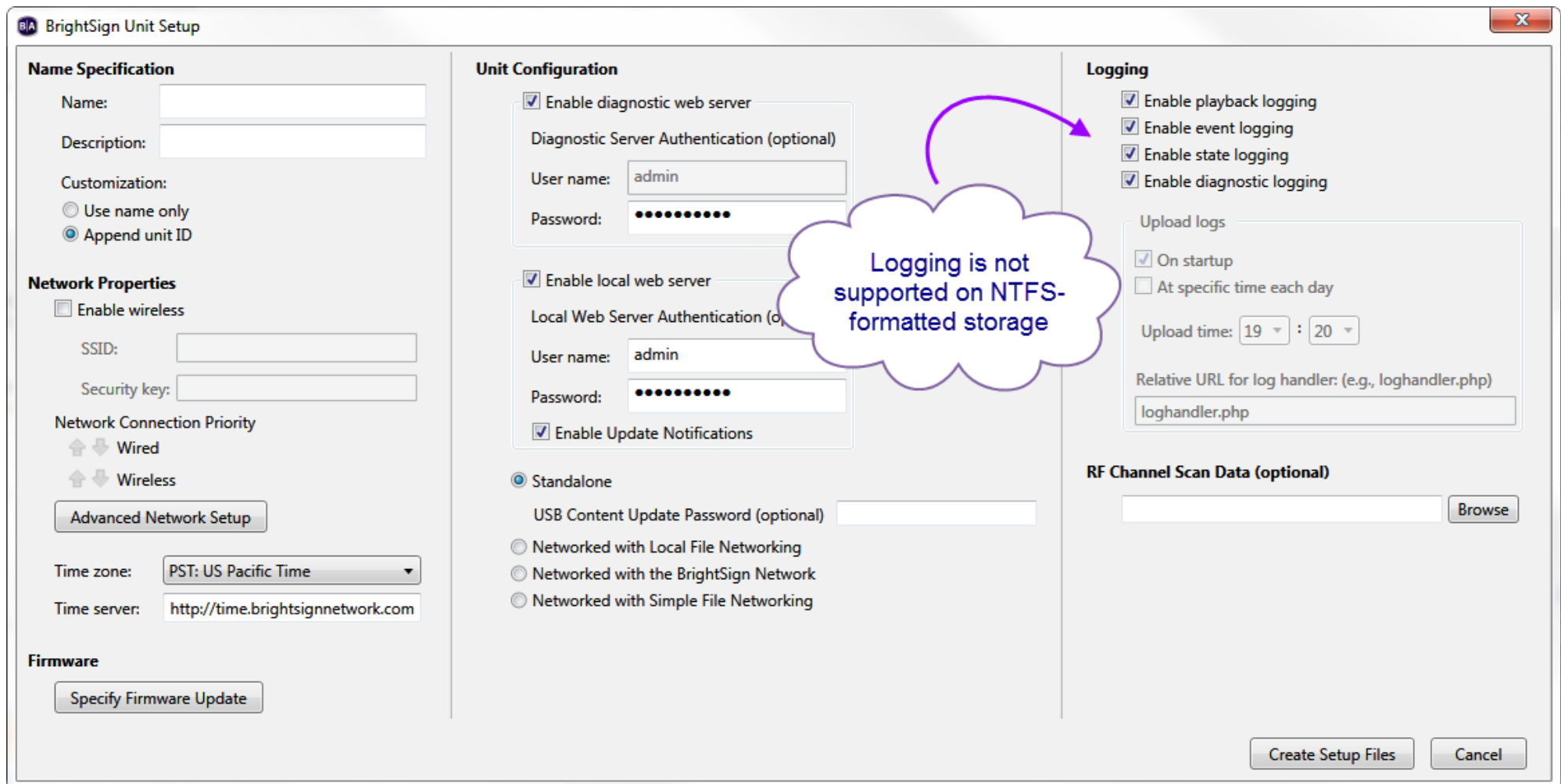
Setting up BrightSign Players

Before you can create and publish presentations, you must first set up your BrightSign player(s). To set up a player, you need to create setup files in BrightAuthor and add those files to a storage device (SD card or USB flash drive). Afterward, insert the storage (usually an SD card) into the BrightSign player. Remember that if you are using an SD card, it must be formatted using FAT32 for the player to receive network updates and generate logs.

You can set up your BrightSign players for standalone use, add them to a Local Network, add them to the BrightSign Network, or set them up for Simple File Networking. Adding players to a network allows you to remotely manage and update your BrightSign players and presentations. Alternatively, using a BrightSign player as a standalone device requires inserting an updated storage device into the player each time you want to update content.

Complete the following steps to set up your BrightSign player. For a detailed description of all items in the *BrightSign Unit Setup* window, including optional settings, refer to the [BrightAuthor User Guide](#).

1. On the menu bar, click **Tools > Setup BrightSign unit**.
2. Under **Name Specification**, enter a name and description for the unit.
3. Under **Network Properties**, choose whether you would like to **Enable wireless** (only some models have wireless capability; please see the [BrightSign Product Comparison Matrix](#) for more details). Choose your preferred **Network Connection Priority**.
4. (Optional) Click **Advanced Network Setup** if you would like to manually configure the player's IP address. This window contains other content download options depending on the [Unit Configuration](#) option you choose.
5. Under **Firmware**, indicate whether you want to update the firmware and to which version. BrightAuthor requires a minimum firmware version to correctly publish presentations to a BrightSign player. The following are the minimum firmware versions you need for certain units:
 - HD120, HD220, HD1020, AU320: Requires firmware version 4.6.46 or later.
 - XD230, XD1030, XD1230: Requires firmware version 4.6.46 or later



Using BrightAuthor to set up a player for standalone use

- Under **Unit Configuration**, choose one of the four setup options, and then complete these steps:
 - Standalone:** Under **Unit Configuration**, enabling the Diagnostic Web Server and Local Web Server is optional.
 - Local File Networking:** Under **Unit Configuration**, enabling the Diagnostic Web Server and Local Web Server is optional.

- **BrightSign Network:** Assign the unit to a group. The player will receive presentations assigned to this group. Set a **Network Connection Frequency** and an **Update Health Frequency**.
 - **Simple File Networking:** In the **URL for web folder** text field, set the location from which the unit will download presentations. Set a **Network Connection Frequency**.
7. Under **Logging**, set your logging preferences.
 8. Click **Create Setup Files**.
 9. Select an SD card or USB flash drive (HD1020, XD1030, XD1230 only) to store the setup files. Click **OK**.
Note: *You must format your SD storage using FAT32 for the player to receive network updates and generate logs. You should only format the storage using NTFS if you need to play media files that are 4GB or larger in size.*
 10. Turn off your BrightSign player by unplugging the power adapter. Insert the SD card or Flash drive into the unit.
 11. Turn on the BrightSign player by reconnecting the power adapter.

The SD card or USB flash drive must remain connected to the BrightSign player or it will not receive scheduled presentations from the network. The BrightSign player has no internal storage and therefore cannot receive content without a storage device connected.

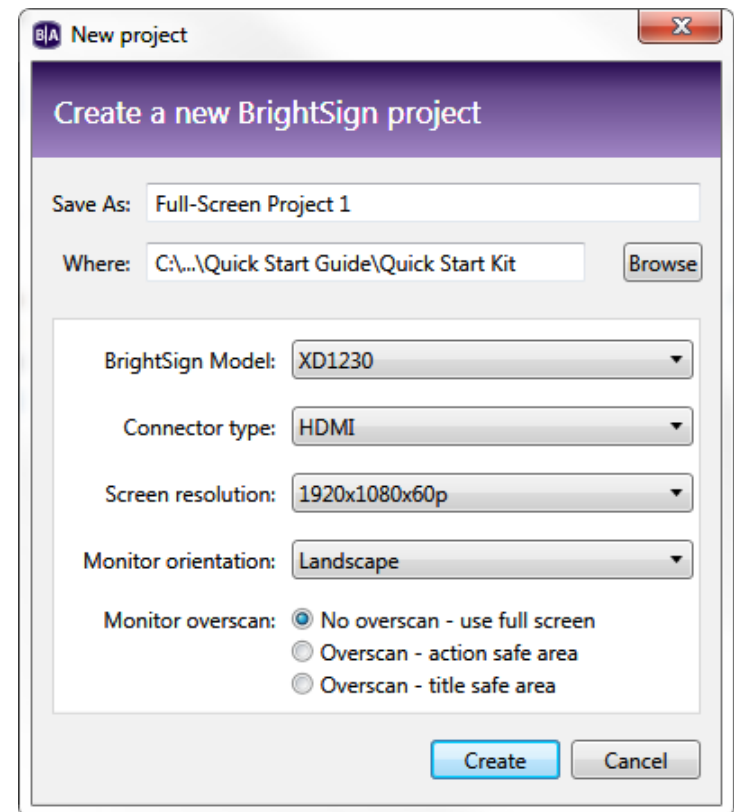
Creating presentations

This guide describes how to create three types of presentations: a [full-screen presentation](#), [multi-zone presentation](#), and [interactive presentation](#). The presentations built in this section are the same as the “FullScreen_HDMI_1080p60.bpf”, “Zones_HDMI_1080p60.bpf”, “Interactive_HDMI_1080p60.bpf” presentation files that are included in the Quick Start Kit. You can use these presentation files as a guide to see how each presentation is built when it is complete.

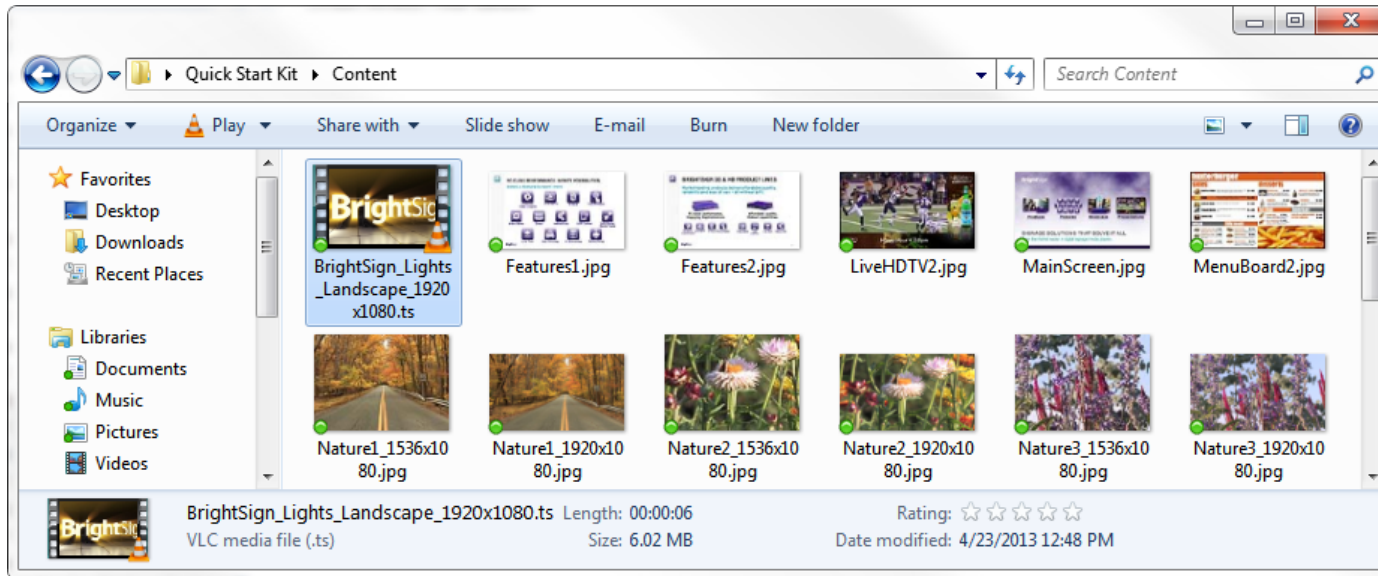
Creating a Full-Screen Presentation

In a full-screen presentation, a single image or video will occupy the entire screen. When you need to create presentations with more than one image or video, you can use playlists to play multiple files in a loop. This section shows you how to create a playlist using BrightAuthor and the sample files provided in the Quick Start kit.

1. Create a new BrightAuthor project:
 - a. Double-click the **BrightAuthor** icon on your desktop.
 - b. Click **File > New Presentation**.
Tip: *If you don't see **New Presentation** under **File**, make sure you have the **Edit**, **Publish**, or **Manage** tab selected in the upper-left side of the screen.*
 - c. In the **Save As** field, enter a name for the presentation.
 - d. In the **Where** field, enter the folder where you want to store the presentation. Click **Browse** to navigate to the desired folder.
 - e. Select your BrightSign Model, Connector type, and Screen resolution.
 - f. Click **Create**.
2. Select the Full Screen template.
3. Click **Choose**.
4. Under **Media Library**, click **Browse** and select the *Content* folder within the *Quick Start Kit* folder.



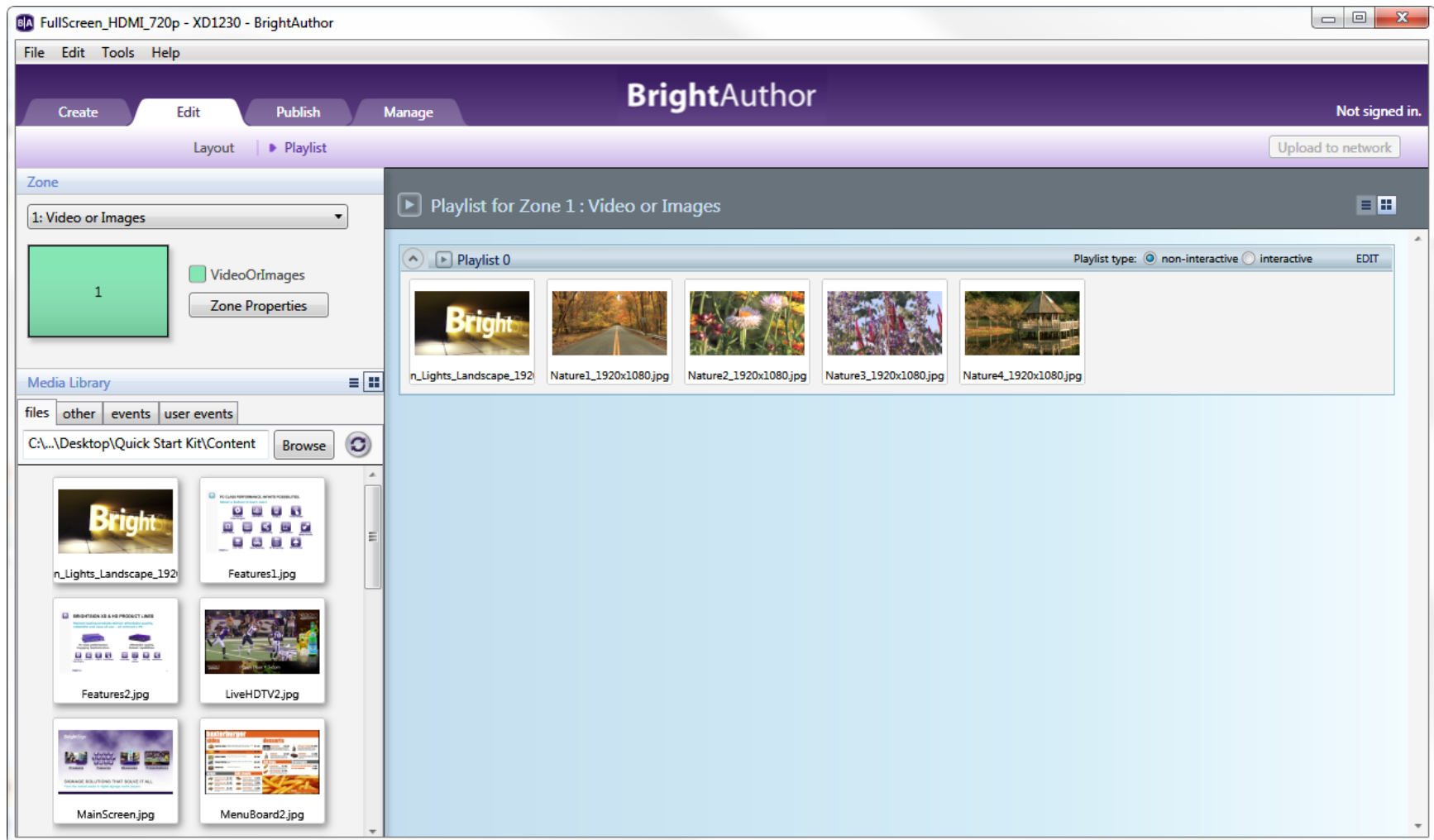
Creating a new full-screen project



Locating the Content folder in the Quick Start Kit

5. Drag one or more files to the playlist area.
6. Set the order in which files play by dragging them to the playlist area in the desired order. You can change the order of files already in the playlist by clicking a file and dragging it to a new position.
7. Right-click a file and click **Edit**:
 - a. For image files: Specify how long each file displays in the presentation and the type of transition that will occur when the image file times out.
 - b. For video files: Specify the volume (between 0-100) of the video.
8. On the Menu bar, click **File** > **Save...** to save your presentation.

For details on publishing the saved presentation to your player, see [Publishing Presentations](#).



Playlist of the "FullScreen_HDMI_1080p60.bpf" presentation file provided in the Quick Start Kit

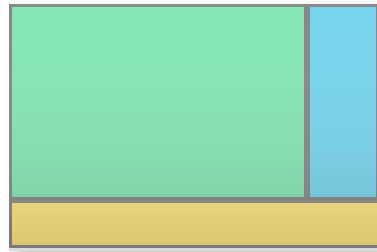
Creating a Multiple Zone Presentation

Using zones, you can divide your signage screen into windows and play different types of content simultaneously in each window, which can include video, audio, images, ticker feeds (RSS or text), or date and time. You can also control transitions between media files, background color, background image, font, text color, text alignment, and text orientation.

Below are a few examples of BrightSign zone templates:



2-Zone



3-Zone



5-Zone

To create a presentation with multiple zones using the sample content, complete the following steps:

1. Create a new BrightAuthor project:

- a. Double-click the **BrightAuthor** icon on your desktop.
- b. Click **File > New Presentation**.

Tip: If you don't see **New Presentation** under **File**, make sure you have the **Edit**, **Publish**, or **Manage** tab selected in the upper-left side of the screen.

- c. In the **Save As** field, enter a name for the presentation.
- d. In the **Where** field, enter the folder where you want to store the presentation. Click **Browse** to navigate to the desired folder.
- e. Select your **BrightSign Model**, **Connector type**, and **Screen resolution**.

Note: This example presentation uses a screen resolution of 1920x1080x60p.

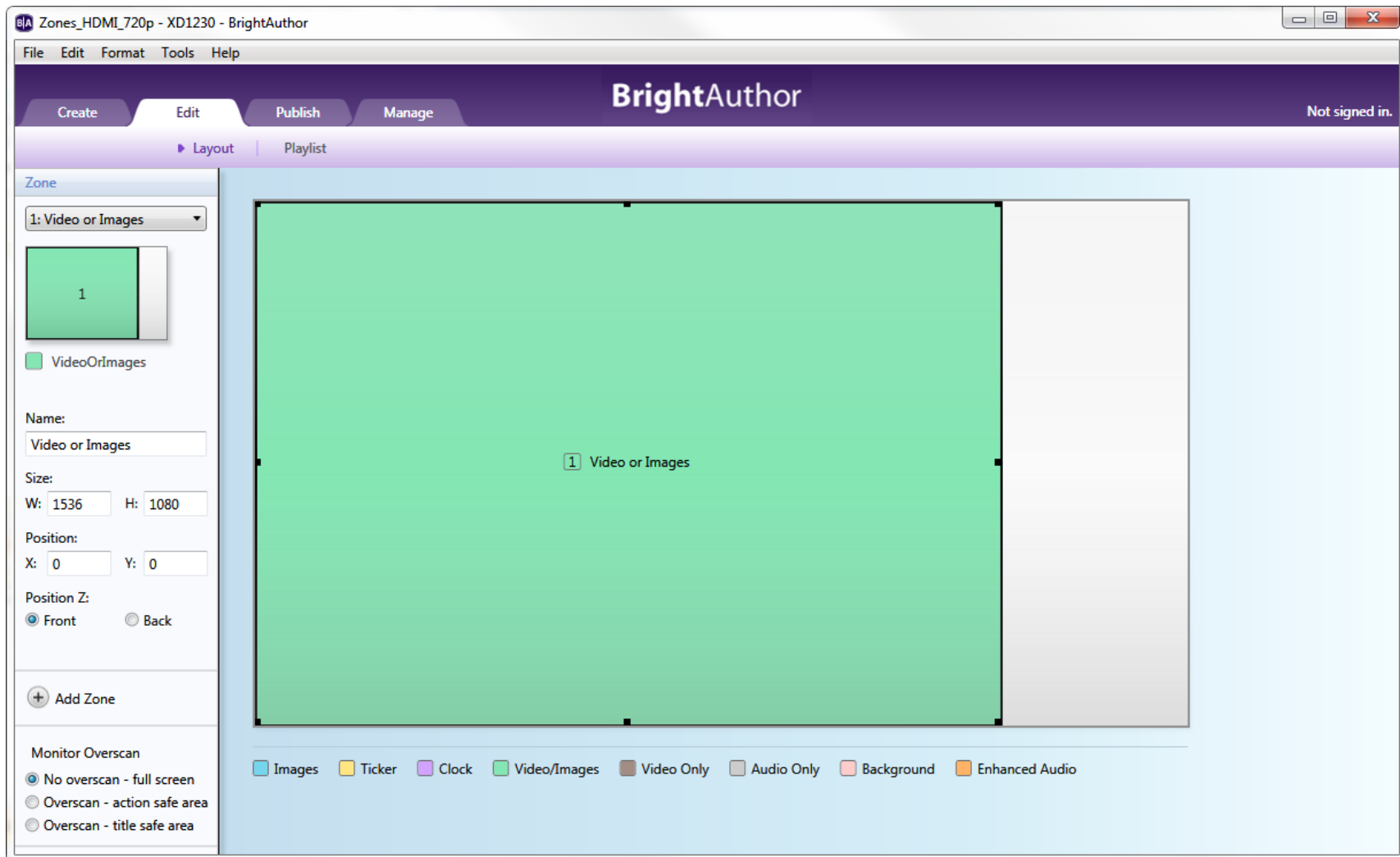
- f. Click **Create**.

2. In the Template window, select the **Full screen** template and click **Choose**. In the following steps, we will modify the zone layout to make it a two-zone vertical presentation with a Video or Images zone and an Images zone .

- **Video or Images:** You can add videos, images, or audio files in this type of zone. If using an HD player, you can only have one video-enabled zone on screen at a time. If using an XD player, you can have up to two.
- **Images:** You can add images to this type of zone. Also, you can add as many image zones as you like to a presentation.

3. Resize the existing zone:

- Navigate to the **Layout** screen under the **Edit** tab.

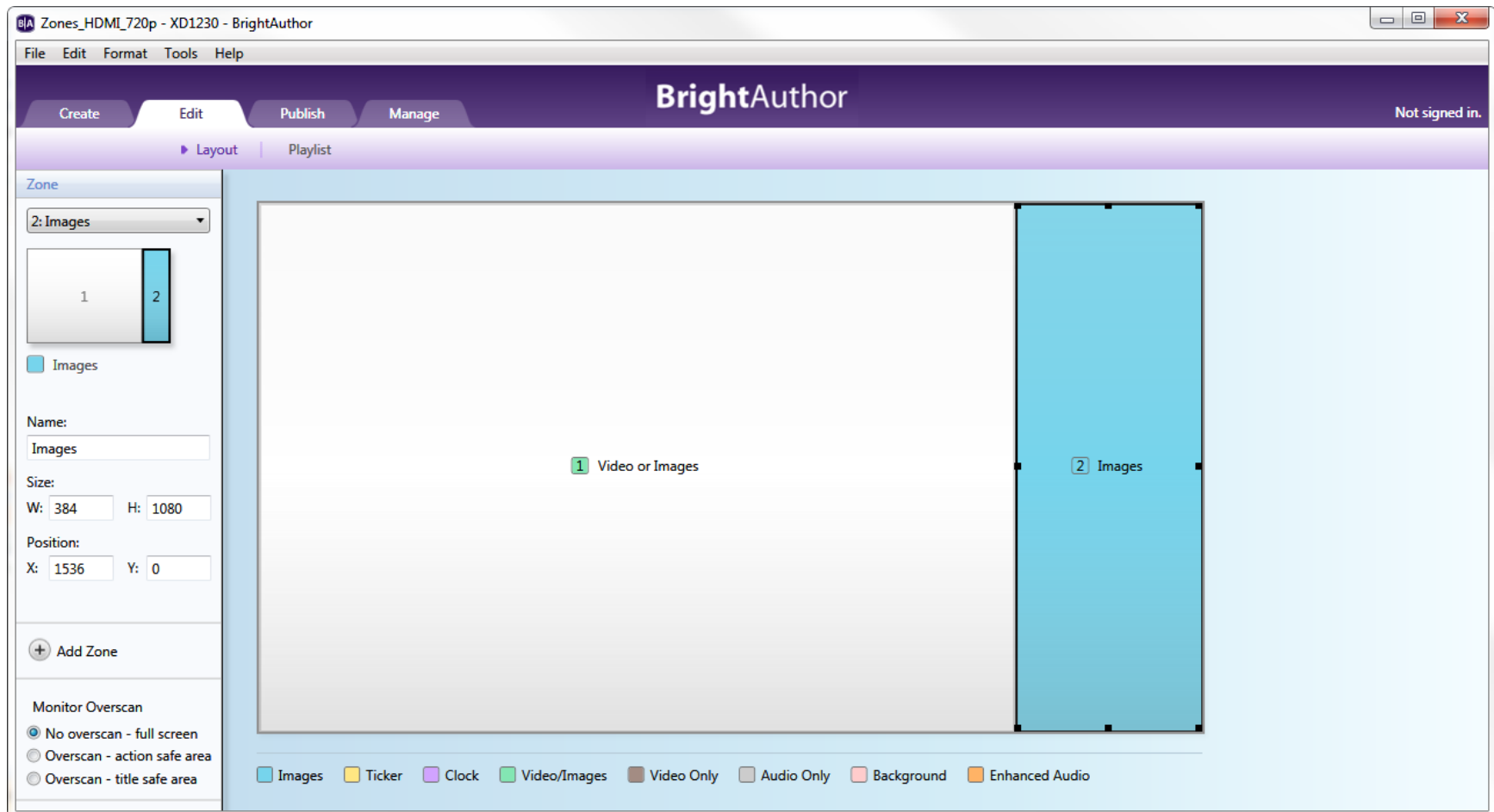


Resizing the Video or Images zone

- b. Select and drag one side of the Video Or Images zone to make the zone thinner. Alternatively, you can specify the exact height and width of each zone using the **W** and **H** fields on the left.

Tip: For best results, match the width and height of your zone to the width and height of your video/image files. The content used in the sample multi-zone presentation is 1536x1080 pixels in size.

4. Add a new zone:
 - a. Click **+ Add Zone** in the **Zone** section on the left.
 - b. Select an **Images** zone and specify a name for the zone.
 - c. Click **OK** to add the zone to the layout.



Adding and reshaping the Images zone

5. Position and resize the new Images zone:
 - a. Place the Images zone to the right of the Video or Images zone by either dragging it or entering the **X** and **Y** coordinates into the **Position** field.
 - b. Resize the zone by clicking and dragging the corners or by entering the exact width and height into the **Position** field. The content used in the Images zone of the sample multi-zone presentation is 384x1080 pixels in size.
6. Add appropriately sized video and image content to the [Playlist](#) of each zone.
7. On the Menu bar, click **File** > **Save...** to store your presentation.

For details on publishing the saved presentation, see [Publishing Presentations](#).

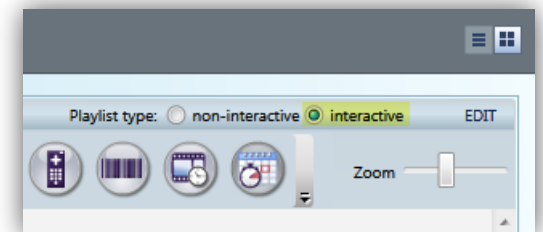
Creating an Interactive Presentation


The HD120, HD220, and HD1020—as well as all XD series of BrightSign players—support various types of interactivity. For a complete list of features and details for each BrightSign model, see the [BrightSign Product Comparison Matrix](#).

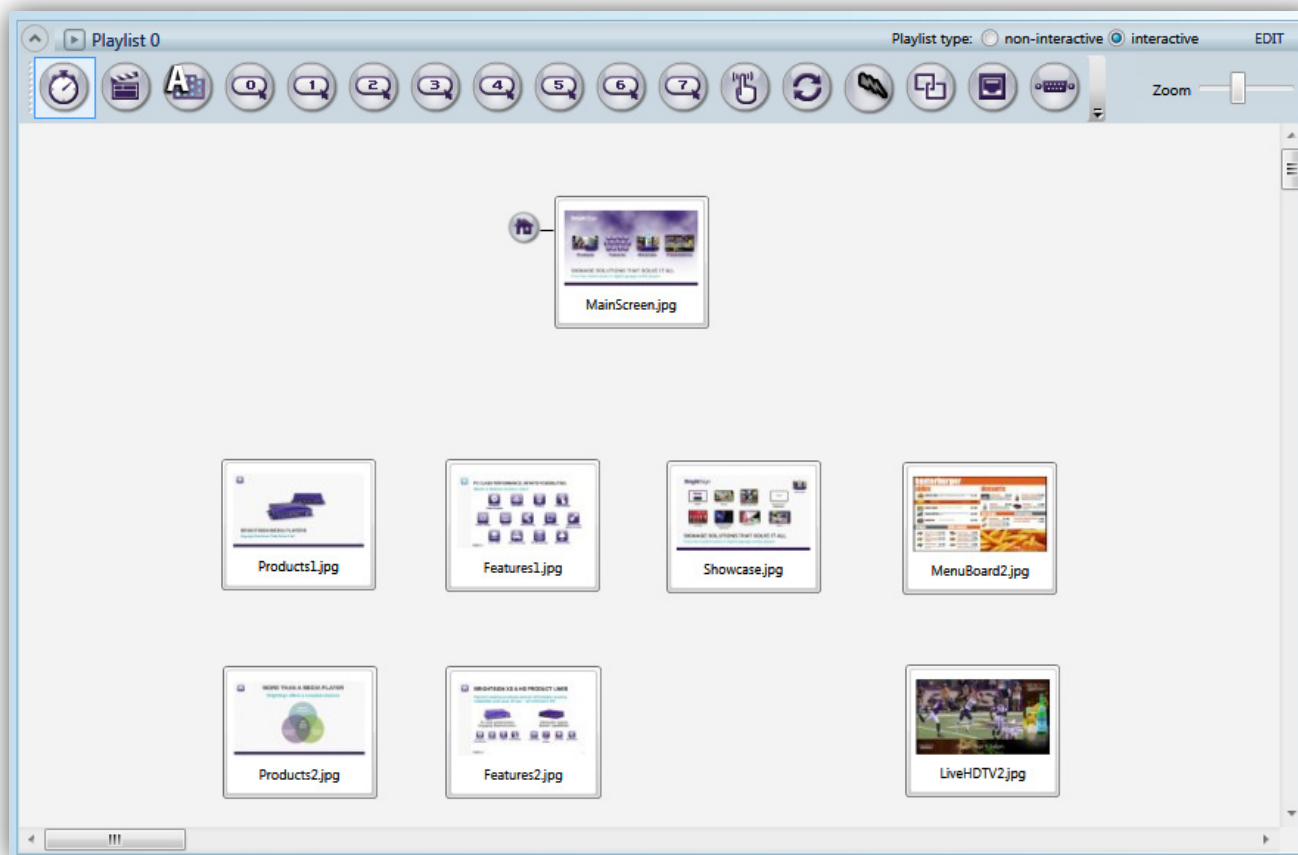
This section of the guide will teach you how to create an interactive presentation with a USB touch screen attached to your BrightSign player (see this [FAQ](#) to learn more about the brands of touch screens we support). Even if you do not have a USB touch screen connected to your BrightSign player, this example can teach you the basics of interactive presentations before you attempt more complex projects. Demos for various types of interactive presentations (included Linked Zones, Touch Screen, and Button Board) can be download from [our website](#).

To create an interactive touch-screen presentation with the sample content, follow these steps:

1. Create a new BrightAuthor project:
 - a. Double-click the **BrightAuthor** icon on your desktop.
 - b. Click **File > New Presentation**.
Tip: *If you don't see **New Presentation** under **File**, make sure you have the **Edit, Publish, or Manage** tab selected in the upper-left side of the screen.*
 - c. In the **Save As** field, enter a name for the presentation.
 - d. In the **Where** field, enter the folder where you want to store the presentation. Click **Browse** to navigate to the desired folder.
 - e. Select your **BrightSign Model**, **Connector type**, and **Screen resolution**.
Note: *This example presentation uses a screen resolution of 1920x1080x60p.*
 - f. Click **Create**.
2. In the Template window, select the **Full screen** template and click **Choose**.
3. Make your presentation interactive:
 - a. Navigate to the **Playlist** window in the **Edit** tab.
 - b. Select the **Interactive** option in the **Playlist type** field on the right.
4. Make the Quick Start Kit content folder your media library:




- a. Select the **files** tab in the **Media Library** section to the left.
 - b. Click the **Browse** button and locate the ...**Quick Start Kit\Content** folder.
 - c. Select the content folder and click **OK**. You should now see the sample image and video files in the **Media Library**.
5. Drag the “MainScreen.jpg” file into the interactive playlist area. Adding this file to the presentation first will make it the Home State (i.e. the media item or state that interactive presentation will always begin with). The Home State will always be designated with the  icon.
 6. Add the following files to the interactive playlist area and arrange them approximately as shown below: “Products1.jpg”, “Products2.jpg”, “Features1.jpg”, “Features2.jpg”, “Showcase.jpg”, “MenuBoard2.jpg”, and “LiveHDTV2.jpg”.

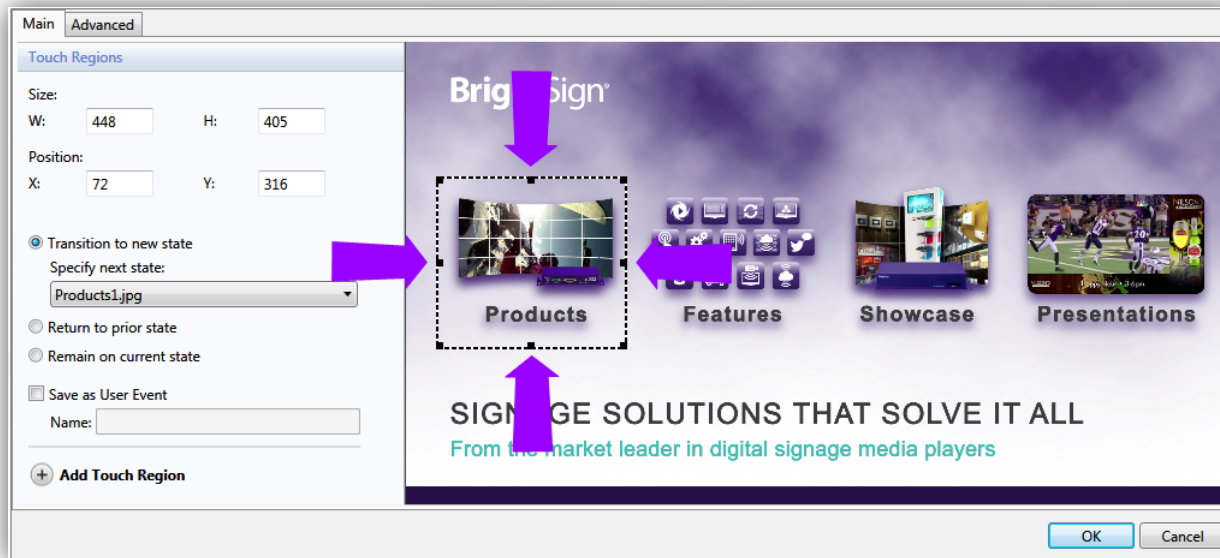


Adding image files to the Interactive Playlist area

7. Now that the media files have been added, you will need to create transitions from the main menu represented by “MainScreen.jpg” image to each of the four menu items:
 - a. Navigate to the **events** tab in the Media Library.
 - b. Drag the **Rectangular Touch** event icon onto the “MainScreen.jpg” state.

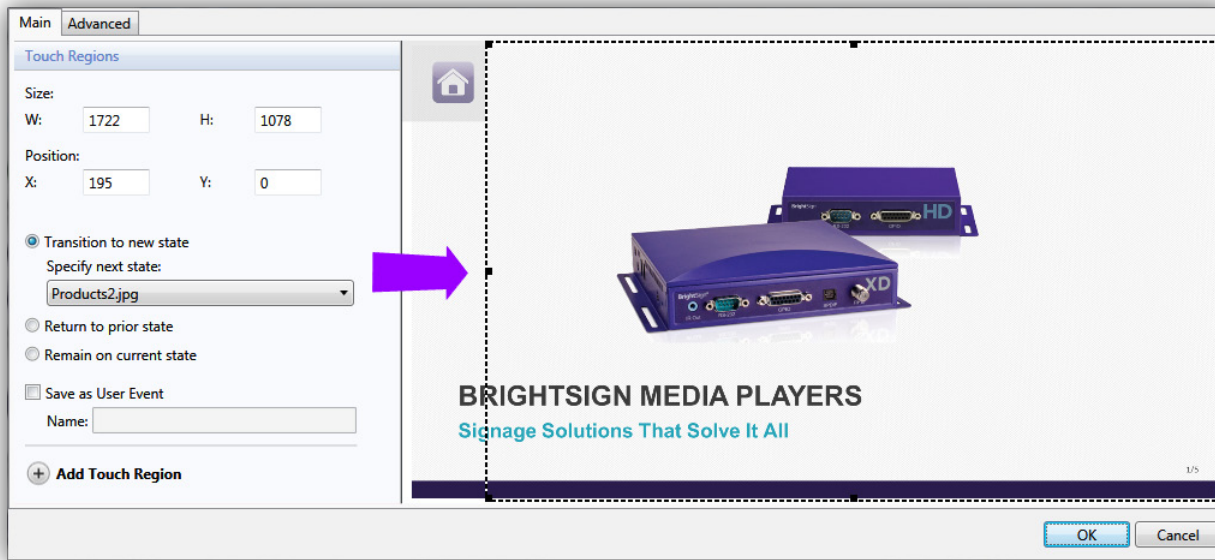
Note: *Alternatively, you can select the corresponding  icon above the interactive playlist area, left-click and hold the “MainScreen.jpg” state, and drag the pointer onto the state you wish to transition to.*

 - c. Redraw the touch region so that it approximately encompasses the “Products” box.



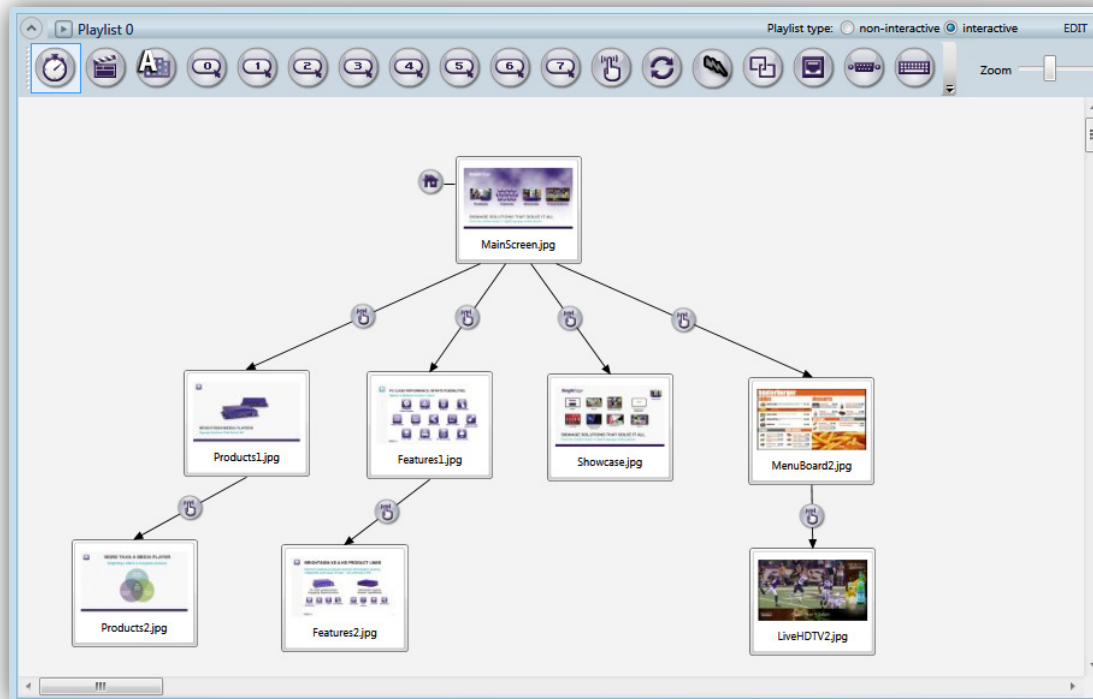
*Resizing the touch region over the **Products** option*

- d. Select **Transition to new state** and specify “Products1.jpg” as the new state.
 - e. Click the **Add Touch Region** button and repeat steps b and c, linking the regions to media files as follows:
 Features to “Features1.jpg”, Showcase to “Showcase.jpg”, and Presentations to “MenuBoard2.jpg”.
8. You can create further transitions using the same methods described above:
 - a. Drag the **Rectangular Touch** icon onto the “Products1.jpg” state.
 - b. Redraw the touch region so that it encompasses all of the screen except for the home icon on the left.



Resizing the touch region for "Products1.jpg"

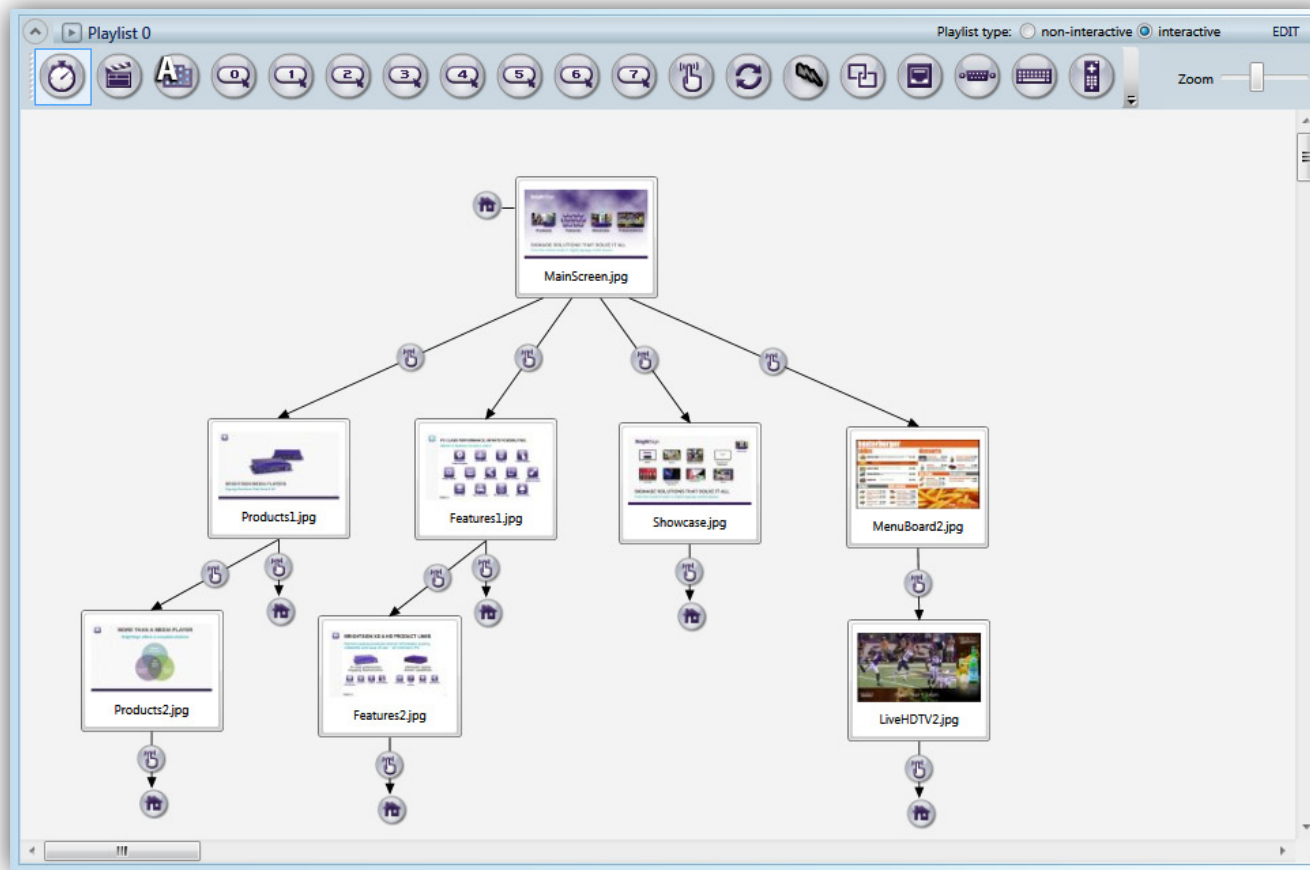
- c. Select **Transition to new state** and specify "Products2.jpg" as the new state.
- d. Repeat the above steps for "Features1.jpg" and "MenuBoard2.jpg", linking them to "Features2.jpg" and "LiveHDTV2.jpg", respectively.



9. Now you will need to create touch screen events that transition back to the Home State:

Note: *In an interactive presentation, it is key that every sequence of events eventually leads back to the Home State. Otherwise, the presentation will eventually become trapped on a state it cannot transition away from. At this point, rebooting the player will be the only way to return to the rest of the presentation.*

- a. Open the Rectangular Touch event that leads from “Products1.jpg” to “Products2.jpg”.
- b. Click the **Add Touch Region** button.
- c. Redraw the touch region so that it surrounds the home icon.
- d. With the **Transition to new state option** selected, choose “MainScreen.jpg” as the next state.



The complete interactive playlist, as shown in the “Interactive_HDMI_1080p60.bpf” presentation file

- e. Repeat the above process for the “Products2.jpg”, “Features1.jpg”, and “Features2.jpg” states.
- f. For the “Showcase.jpg” and “LiveHDTV2.jpg” states, add a touch region to the state that encompasses the entire screen area and transitions back to the Home State.

You have now created an interactive menu that viewers can navigate using a touch screen. Viewers can move forward through the slides, as well as return to the main menu at almost any time. To learn how to publish this presentation to a BrightSign player, please see the [Publishing Presentations](#) section below.

Publishing Presentations

After creating a presentation, you can publish the content to your BrightSign player using one of four methods: Local Storage, Local Networking, Simple File Networking, or the BrightSign Network. This guide will teach you how to publish your presentations to an SD card and update your BrightSign player manually via local storage. For details on the other publishing methods, please see the [BrightAuthor User Guide](#).

Note: *You must format your SD storage using FAT32 for the player to receive network updates and generate logs. You should only format the storage using NTFS if you need to play media files that are 4GB or larger in size.*

To publish a presentation to an SD card:

1. Insert an SD card into your computer's card reader.
2. Click the **Publish** tab in the upper-left side of the BrightAuthor screen.
3. Select the **Local Storage** option (below the **Publish** tab).
4. In the **Presentations** section, click **Browse**, select the folder where the presentation is saved, and then click **OK**.
5. Select the presentation you wish to publish from the list of presentations.
6. Drag the presentation into the calendar to set a time when the presentation will play. You can expand or contract the time range by clicking, holding, and moving the lower border of the colored field. Double-click the presentation in the calendar to further customize the play schedule:
 - (default) The presentation plays during a limited time range on a single, specific day. Customize the range by changing the **Start** and **End** times in the **Event time** field.
 - **Active all day, every day:** Check this box to have the presentation play continuously without interruptions or end times/dates.
 - **Recurring Event:** Check this box to have the presentation play for a limited time during a recurring pattern of days. You can further customize whether you want the presentation to play daily, every weekday, every weekend, or during certain days of the week. Use the **Range of recurrence** field to choose what dates the recurring event will begin and end.

The screenshot shows the BrightAuthor software interface. The main window is titled "Project 1 - XD1230 - BrightAuthor". The menu bar includes "File", "Schedule", "Edit", "Tools", and "Help". The top navigation bar has tabs for "Create", "Edit", "Publish", and "Manage". The user is signed in as "peterdemo".

The interface is divided into several sections:

- Presentations:** A list of presentations including "C:\Quick Start Kit", "FullScreen_HDMI_720p", "Interactive", and "Zones_HDMI_720p".
- Debugging:** Checkboxes for "Enable serial debugging" and "Enable system log debugging".
- Publish to:** A section for selecting the target device, currently set to "G:\".
- Calendar:** A calendar view for "March 2-8 2014". The calendar shows a "non-stop event" for "FullScreenHDMI_720p" on every day from Sunday, 3/2 to Saturday, 3/8, from 8 am to 8 pm.

In the screen shot above, the presentation is set to “Active all day, every day”

7. In the **Publish to** section, click **Browse**, select the drive where your SD card is located, and then click **OK**.
8. Click **Publish**. When the **Publish Complete** notification appears, click **OK**.

9. Turn off your BrightSign player by unplugging the power adapter.
10. Insert the SD card used in the above steps into the BrightSign player.
11. Turn on the BrightSign player by reconnecting the power adapter.
12. Leave the SD card in the player. A local storage device (SD card or USB flash drive) must always remain inserted in the BrightSign player, regardless of which publishing method you are using. The only time a storage device should be removed from the player is when you are manually updating the content.

Next steps

Visit these areas of our webpage to get the most from your BrightSign player:

- [Documentation](#): Get the latest user guides, release notes, scripting references, hardware reference manuals, and regulatory guides.
- [Demos](#): Get more presentation examples, and get an overview of what BrightSign players are capable of, by downloading the BrightSign demos.
- [Tutorials](#): Get step-by-step instructions on how to use BrightAuthor to create presentations, publish presentations, and more.
- [Downloads](#): Get the latest BrightSign firmware, BrightAuthor software, Autoplay scripts, scripts for manually setting the date & time, and scripts for testing button boards.
- [Support](#): Contact technical support if you are having trouble with your BrightSign player.