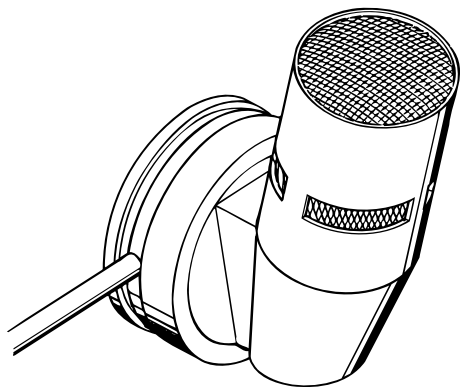
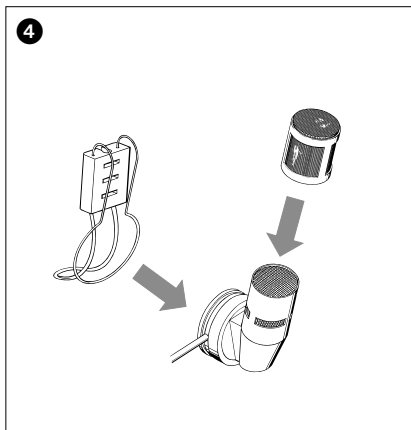
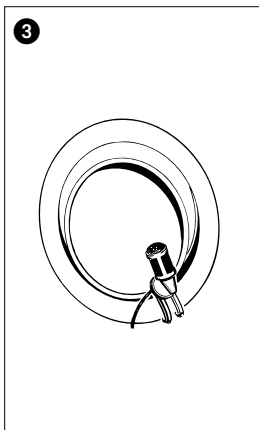
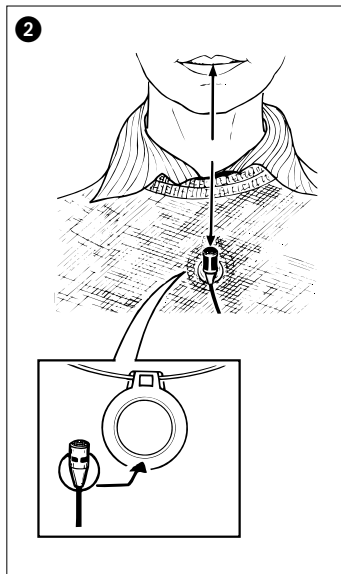
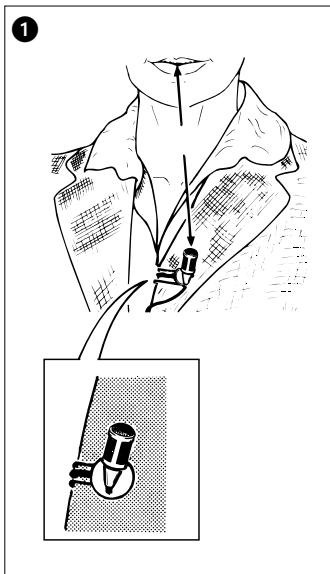


**GEBRAUCHSANLEITUNG
INSTRUCTIONS FOR USE
INSTRUCTIONS POUR L'USAGE
ISTRUZIONI PER L'USO
INSTRUCCIONES PARA EL USO**

MKE 40





Condenser clip-on microphone with omnidirectional characteristic for top sound-quality requirements. Suitable for vocal transmission and miking up instruments in all fields of live sound transmission.

Characteristics

- Pronounced directivity
- Small dimensions
- Insensitive to feedback
- Insensitive to structure-borne noise
- Balanced frequency response

Types

MKE 40-2 R	With miniature coaxial connector for direct connection to Mikroport transmitter SK 2012 (all types).
MKE 40-4	With miniature coaxial connector for direct connection to Mikroport transmitters SK 50 or SK 250.
MKE 40-60	To match the handgrip/powering modules K6 /K6P
MKE 40-P	phantom powered 48 V with XLR-3 plug

Fastening the microphone

See fig. ❶ and ❸. Note: If the magnet holder is used (fig. ❷), remove the clip.

Using the windscreen

The windscreen (fig. ❹) should be used for both indoor and outdoor recordings in order to avoid the effect of wind and pop noise.

Technical Data

Frequency response
Acoustical mode of operation
Directional characteristic
Free-field open-circuit sensitivity
Equivalent noise level

Sound pressure level limit
Dimensions in mm

...-2 R Rated impedance
Minimal terminating impedance
Feed
Plug
Cable length
Delivery includes:

...-4 Rated impedance
Minimal terminating impedance
Feed
Plug
Cable length
Delivery includes:

...-60 Rated impedance
Minimal terminating impedance
Feed
Plug
Cable length
Delivery includes:

...-P Rated impedance
Minimal terminating impedance
Feed
Plug

Cable length
Delivery includes:

MKE 40 ...

40 - 20 000 Hz
pressure gradient transducer
cardioid
8 mV/ Pa \pm 2.5 dB (1000 Hz)
27 dB A-weighted (DIN IEC 651)
37 dB CCIR weighted (CCIR 468-1)
133 dB at 1 kHz (K=1%)
Ø12, approx. 26 long

ca. 1,3 kOhm
15 kOhm
from transmitter SK 2012
Microdot
approx. 1,1 m
1 Wind-shield MZW 40 black
1 Wind-shield MZW 40 grey
1 Magnet holder set MZM 2 / MZM 10
1 Clip

ca. 1,3 kOhm
15 kOhm
from transmitter SK 50 or SK 250
Lemo-plug 4 pins
approx. 1,6 m
1 Wind-shield MZW 40 black
1 Wind-shield MZW 40 grey
1 Magnet holder set MZM 2 / MZM 10
1 Clip

ca. 130 Ohm
300 Ohm
from K6/K6P feed modul
Special plug system K6
approx. 3 m
1 Wind-shield MZW 40 black
1 Clip black

ca. 50 Ohm
1000 Ohm
phantom feed 12-48V
XLR-3 plug with integrated
phantom feed adapter
approx. 3 m
1 Wind-shield MZW 40 black
1 Clip black

Nominal frequency response with tolerance field / Pick-up pattern

