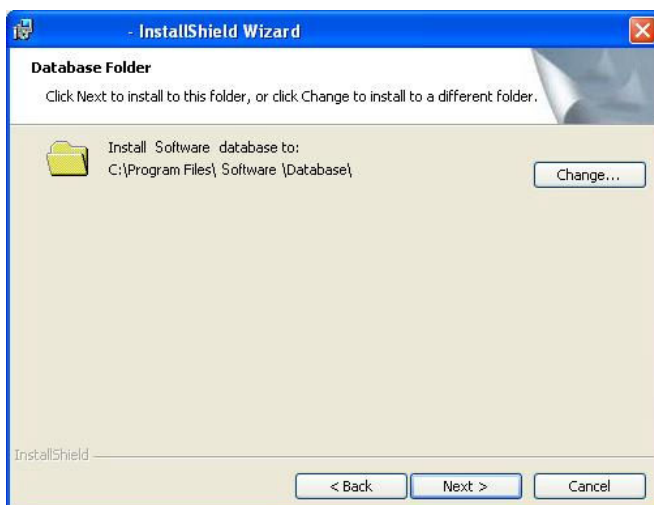
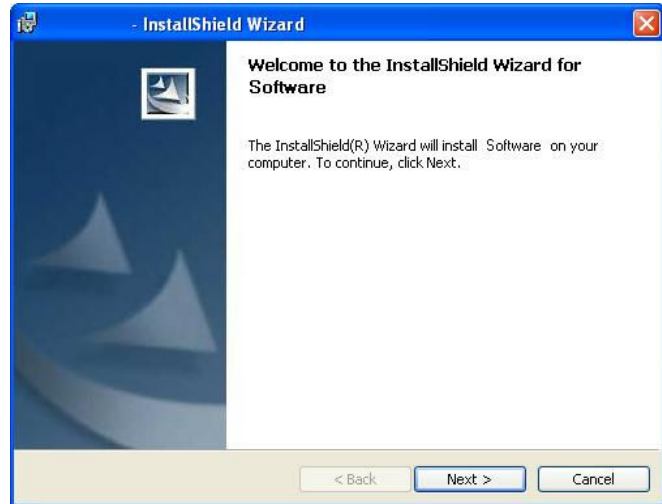
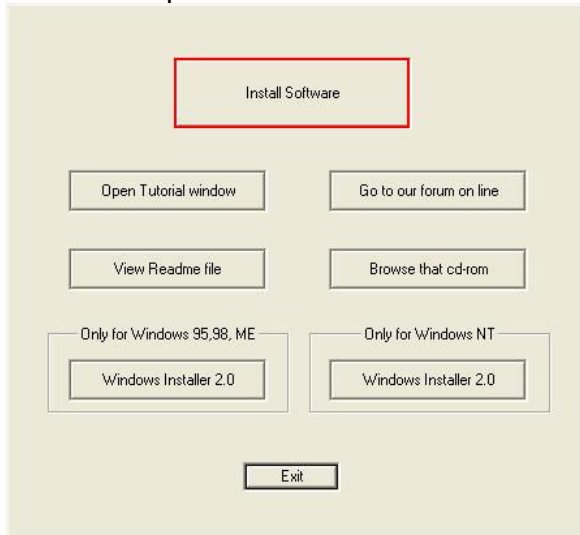


First step: software installation

Install the software before plugging the interface. Otherwise the interface can not be recognized by the operating system. Moreover the operating system might try to set up the interface with another wrong driver from its existing driver database. Insert the cd-rom in the computer disk drive and wait for this screen. Select "Install Software" and answer "Next" on following screens during software installation process.



The last screen guaranty the software is well installed on the computer.

Second step: hardware installation

Once the software is installed, the driver files are stored into the operating system. Plug the USB interface. The computer will automatically detect a new device. On Windows® XP, this screen appears. Select install the driver automatically. The operating system will use the stored driver files to set up the interface.



Because this driver is not registered in Microsoft® database, this screen appears. Select “Continue Anyway” in second screen.

This screen guaranty the usb interface is well installed on the computer.



Limit of guaranty

The interface is not guarantied against ground loop. A faulty power phase on your lights can bring a ground loop that can damage the interface. We strongly suggest you to check your electrical installation before plugging the dmx line to the interface. Or if you are not sure your electrical installation is ground loop safe, we advice you to use a dmx optical isolator (ask your retailer).