

B O S S C O M

Professional Wall Plates



2014



B O S S C O M

BOSSCOM's BossAV Wall Plate Series offers an ideal integration of media technology through modular wall plate transmitters which can individually be equipped with HDMI, VGA, network and other data and audio/video interfaces.

The mountings are easy to install and compatible with common German flush mounting boxes.

The mountings' and connection panels' special design provides a perfect look and is ideal for ambitious audiovisual installations.

Highlights

- Wide range of data and audio/video interfaces
- High flexibility through individual equipment of mountings
- High-quality refined metal mounting surfaces

BossAV Series - Wall Plates

BossAV Frame-1

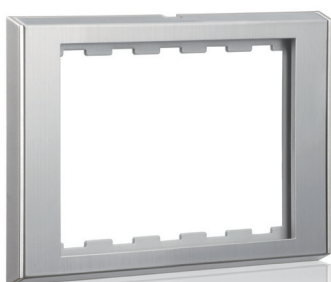


Wall Plate frame 2 slot

BOSSCOM - BossAV Series. 2 slot Wall Plate frame. Material: Metal. Color: Silver grey. Size: 86 x 86 mm.

ITEM NO.	SIZE
08188090	86 x 86 mm

BossAV Frame-2



Wall Plate frame 5 slot

BOSSCOM - BossAV Series. 5 slot Wall Plate frame. Material: Metal. Color: Silver grey. Size: 146 x 86 mm.

ITEM NO.	SIZE
08308090	146 x 86 mm

BossAV MOD-AU



Volume control tuner Wall Plate

BOSSCOM - BossAV Series. 1 slot Audio L/R + volume control tuner Wall Plate module. Color: Silver grey. Size: 22 x 68 mm.

ITEM NO.	INPUT	OUTPUT	SIZE
08208090	1x Audio L/R (Cinch)	5-Pin Phoenix	22 x 68 mm

BossAV MOD-ET



RJ45 Wall Plate

BOSSCOM - BossAV Series. 1 slot 2x RJ45 Wall Plate module. Color: Silver grey. Size: 22 x 68 mm.

ITEM NO.	INPUT	OUTPUT	SIZE
08218090	2x RJ45	RJ45 path through	22 x 68 mm

BossAV Series - Wall Plates

BossAV MOD-HD



HDMI Wall Plate

BOSSCOM - BossAV Series. 1 slot HDMI Wall Plate module.
Color: Silver grey. Size: 22 x 68mm.

ITEM NO.	INPUT	OUTPUT	SIZE
08228090	HDMI	HDMI 0,10 m	22 x 68 mm

BossAV MOD-RB



Component Wall Plate (3x RCA)

BOSSCOM - BossAV Series. 1 slot component (3x RCA) Wall Plate module.
Color: Silver grey. Size: 22 x 68 mm.

ITEM NO.	INPUT	OUTPUT	SIZE
08238090	3x RCA	5-Pin Phoenix	22 x 68 mm

BossAV MOD-RC



C-Video + Audio Wall Plate

BOSSCOM - BossAV Series. 1 slot C-video + audio (3x RCA) Wall Plate module.
Color: Silver grey. Size: 22 x 68 mm.

ITEM NO.	INPUT	OUTPUT	SIZE
08248090	C-video + audio 3x RCA	5-Pin Phoenix	22 x 68 mm

BossAV USA



USB-B Wall Plate

BOSSCOM - BossAV Series. 1 slot USB-B Wall Plate module.
Color: Silver grey. Size: 22 x 68 mm.

ITEM NO.	INPUT	OUTPUT	SIZE
08258090	1x USB-B	1x USB-A	22 x 68 mm

BossAV Series - Wall Plates

BossAV USB



USB-B Wall Plate

BOSSCOM - BossAV Series. 1 slot USB-B Wall Plate module.
Color: Silver grey. Size: 22 x 68 mm.

ITEM NO.	INPUT	OUTPUT	SIZE
08268090	1x USB-B	1x USB-B	22 x 68 mm

BossAV VG



VGA + Audio Wall Plate

BOSSCOM - BossAV Series. 1 slot VGA + audio (3.5 mm mini jack) Wall Plate module.
Color: Silver grey. Size: 22 x 68 mm.

ITEM NO.	INPUT	OUTPUT	SIZE
08278090	1x VGA + 1x audio (3.5 mm mini jack)	5-Pin Phoenix	22 x 68mm

BossAV MOD-XL



Audio XLR + RJ11 Wall Plate

BOSSCOM - BossAV Series. 1 slot Audio XLR + RJ11 Wall Plate module.
Color: Silver grey. Size: 44 x 68 mm.

ITEM NO.	INPUT	OUTPUT	SIZE
08288090	1x Audio XLR 1x RJ11	5-Pin Phoenix	44 x 68 mm

BossAV COVER



Blank Wall Plate

BOSSCOM - BossAV Series. Blank Wall Plate module 1 slot.
Color: Silver grey. Size: 22 x 68 mm.

ITEM NO.	SIZE
08298090	22 x 68 mm

BOSSCOM Denmark

Oldenvej 21
DK- 3490 Kvistgaard
Phone: (+45) 7020 0045
Fax: (+45) 4594 0669
Email: sales@bosscom.com
Web: www.bosscom.com

© 2014 Bosscom Denmark. All rights reserved.
All trade names are registered trademarks of
respective manufactures listed.
HDMI is a trademark of HDMI Licensing LLC.



B O S S C O M