

RMUBRKT1 RMU Pan-and-Tilt Bracket



Product Description

The RMUBRKT1 RMU pan-and-tilt bracket attaches to the rear panel threaded inserts of all RoomMatch® Utility loudspeakers. It allows both pitch and yaw adjustments to enable flexible mounting options.

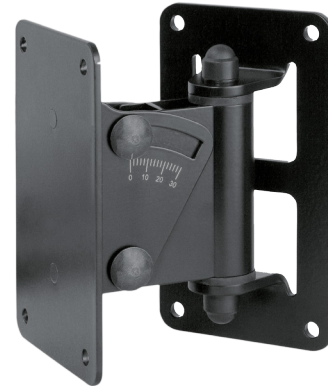
The bracket fits the 4x M8 threaded inserts (127 x 70 mm) on the rear panel of RMU208, RMU206 and RMU108 models, as well as the 2x M8 threaded inserts (75 mm spacing) on the rear panel of the RMU105.

Key Features

- Fits all RMU loudspeakers
- Horizontal or vertical mounting (RMU105, vertical only)
- Convenient hook-and-lock method for easy mounting

Technical Specifications

Mechanical			
Angle of inclination	0° to 30°		
Speaker plate	5.9" x 3.7" (15.0 cm x 9.4 cm)		
Wall plate	6.3" x 3.5" (16.0 cm x 8.9 cm)		
Material	Steel		
Maximum load capacity	33.0 lb (15.0 kg)		
Swivel	90°		
Wall clearance	4.3" (10.9 cm)		
Weight	2.6 lb (1.2 kg)		
General			
Compatible with	RMU208, RMU206, RMU108, and RMU105 Small-Format Foreground/Fill Loudspeakers		
Product codes	738453-0110 – RMUBRKT1 RMU Pan-and-Tilt Bracket, Black 738453-0210 – RMUBRKT1 RMU Pan-and-Tilt Bracket, White		
Pitch and Yaw adjustments with RMU loudspeakers			
	Orientation	Pitch	Yaw
RMU208	Horizontal	0 – 30°, infinite resolution	±15°, infinite resolution
	Vertical	0 – 15°, infinite resolution	±60°, infinite resolution
RMU206	Horizontal	0 – 30°, infinite resolution	±20°, infinite resolution
	Vertical	0 – 20°, infinite resolution	±50°, infinite resolution
RMU108	Horizontal	0 – 30°, infinite resolution	+20 thru –30 or +30 thru –20 based on bracket orientation
	Vertical	0 – 25°, infinite resolution	±55°, infinite resolution
RMU105	Vertical, only	0 – 25°, infinite resolution	±55°, infinite resolution



Applications

Wall-mounting loudspeakers for:

- Performing arts centers
- Auditoriums
- Houses of worship
- Conference facilities
- Bars and nightclubs
- Hospitality
- Retail
- Restaurants