

# LODESTAR®

## ELECTRIC CHAIN MOTOR

### CAPACITIES

125 kg to 2 tonne

### LIFT

18 metre standard\*\*\*

### SPEEDS

1.5 to 30 metre/minute

### VOLTAGES

1-phase & 3-phase available

From world touring rock concerts and Broadway musicals to Las Vegas shows and sporting events, the CM Lodestar is the trusted industry workhorse.

### BENEFITS & FEATURES

#### IP 66 RATING

An Ingress Protection (IP) Rating of 66 indicates that the Lodestar offers protection from dust and high-pressure water – making this unit ideal for use in outdoor environments.

#### HIGH-PERFORMANCE COMPOSITE CORD GRIPS

Prevent water from entering the motor body at the pendant and power cord points of entry.

#### CONTINUOUS GASKETS

Create a waterproof seal between the gearbox assembly and the back frame and motor covers.

#### O-RINGS ON LIFT WHEEL BEARING

Prevent water from entering the motor body through the lift wheel opening.

#### 5 POCKET LIFTWHEEL

Improved chain wear & smooth lifting.

#### CLUTCH OUTSIDE GEAR TRAIN

Meets international standards and is adjustable.

#### PRECISION HELICAL GEARING

For quieter operation.

#### REDESIGNED CONTROL PANEL

For easier access.

#### HEAVY DUTY DC BRAKE

Designed for a long service life, the brake location allows for quick access & easy inspection.

#### LOW VOLTAGE CONTROL

110 Volt for long cable runs without voltage drop. 24 & 48 Volt optional. (Low Voltage Unit Only)

#### DURABLE & LIGHTWEIGHT HOUSING

Cast aluminum. Black powder coated finish for low visibility.

#### GEARING

Helical design for long wear life and smooth operation.

#### LOAD CHAIN

Designed and manufactured by Columbus McKinnon. Zinc plated to protect against corrosion. Optional black finish available.

#### DUTY CYCLE

H-4 duty rated for heavy duty application. 2M+ FEM class. 50% Duty Cycle 300 operations for H-4. 240 for FEM per hour.

#### ELECTRICAL

Finger safe wiring meets all electrical codes. Quick change plugs allow for voltages 208 through 460. Prevents improper voltage connections which can cause hoist damage. (Low Voltage Unit Only)

#### ADJUSTABLE LIMIT SWITCH

Adjustable screw limit switch that will automatically stop the hook at any predetermined point when either lifting or lowering, preventing overtravel. (Low Voltage Unit Only)

#### OVERLOAD PROTECTOR

Designed to prevent lifting of excessive overloads. Helps prevent lifting of dangerous overloads.

#### METRIC RATED MEETS REQUIREMENTS

Meets or exceeds world standards.

#### ROAD READY

Easy to stow and travel.

#### LIFETIME WARRANTY

The industry's best.



**OPTIONAL FEATURES**

**DOUBLE DC BRAKE**

Two independent acting DC brakes for redundant braking. Field installation kit available.

**AC ELECTRIC BRAKE**

**DOUBLE LIMIT SWITCH**

Adjustable screw limit switch that will automatically stop the hook at any predetermined point when either hoisting or lifting.

**ENCODERS**

Available for positioning incremental and absolute.

**VARIABLE SPEED UNITS AVAILABLE (VFD)**

Varistar or variable speed versions available, please contact your CM-ET sales representative for details.

**CM ALLOY LATCHLOK® HOOKS**

Latchlok® hooks combine innovative design and solid allow steel. I-beam construction offers more reliable performance than any other hook on the market.

- One-hand operation and recessed push-button thumb release for smooth and dependable opening.
- Hook remains locked until released by the operator, even if chain goes slack.
- Sturdy forged heat treated I-beam construction for strong, yet lightweight hooks.
- Lifetime warranty.
- Made in U.S.A.

**CHAIN BAGS**

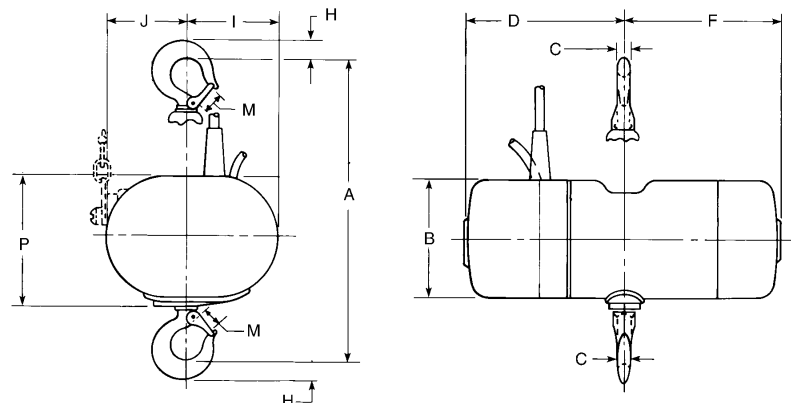
Cloth type bags easy-to-mount.

**DIRECT CONTROL UNITS**

The CM Lodestar is available as a Direct Control Unit. Featuring a single cable, this Direct Control Unit can be used as part of a system with multiple units with a single control. The Lodestar is compatible with most Direct Control Motor Controllers.

**DIMENSIONS**

Drawing Legend	Dimensions (mm)		
	D8 Series A, AA, B, C, E, F, H	D8 Series J, L, LL	D8 Series JJ, R, RR
B	154mm	194mm	194mm
C	17mm	22mm	29mm
D	297mm	253mm	253mm
F	225mm	329mm	329mm
H	25mm	30mm	38mm
I	107mm	145mm	179mm
J	113mm	176mm	142mm
M	25mm	28mm	33mm
P	168mm	208mm	208mm



**SPECIFICATIONS**

Type	Rate Capacity	Standard Lifting Speed at 50Hz	Operating Voltage	Single Phase Voltage	FEM Class	FEM Duty Factor	Chain Weight Per Metre Lift-EWL	Load Chain EN 818-7 (mm)	Power Consumption - Full Load	Reeves Fall of Chain	Motor HP	Protection Class	Noise Level
Model B	250kg	4m/min	400-3-50	optional	2M	50%	0.89kg	6.3 x 18.9	1.1A	1	1/4 HP	IP 66	68 db (A)
Model C	250kg	8m/min	400-3-50	optional	2M	50%	0.89kg	6.3 x 18.9	1.2A	1	1/2 HP	IP 66	68 db (A)
Model F	500kg	4m/min	400-3-50	optional	2M	50%	0.89kg	6.3 x 18.9	1.2A	1	1/2 HP	IP 66	68 db (A)
Model J	500kg	8m/min	400-3-50	-	2M	50%	1.42kg	7.9 x 21.7	2.3A	1	1 HP	IP 66	68 db (A)
Model JJ	500kg	16m/min	400-3-50	-	2M	50%	1.42kg	7.9 x 21.7	3.6A	1	2 HP	IP 66	68 db (A)
Model L	1000kg	4m/min	400-3-50	optional	2M	50%	1.42kg	7.9 x 21.7	2.3A	1	1 HP	IP 66	68 db (A)
Model LL	1000kg	8m/min	400-3-50	-	2M	50%	1.42kg	7.9 x 21.7	3.6A	1	2 HP	IP 66	68 db (A)
Model R	2000kg	2m/min	400-3-50	optional	2M	50%	2.84kg	7.9 x 21.7	2.3A	2	1 HP	IP 66	68 db (A)
Model RR	2000kg	4m/min	400-3-50	-	2M	50%	2.84kg	7.9 x 21.7	3.6A	2	2 HP	IP 66	68 db (A)

\*\*\* Lifts other than 18 metres available (Standard Units shipped less chain unless specified). Consult factory for additional speeds and capacities



AUTHORISED DISTRIBUTOR FOR COLUMBUS MCKINNON ENTERTAINMENT PRODUCTS